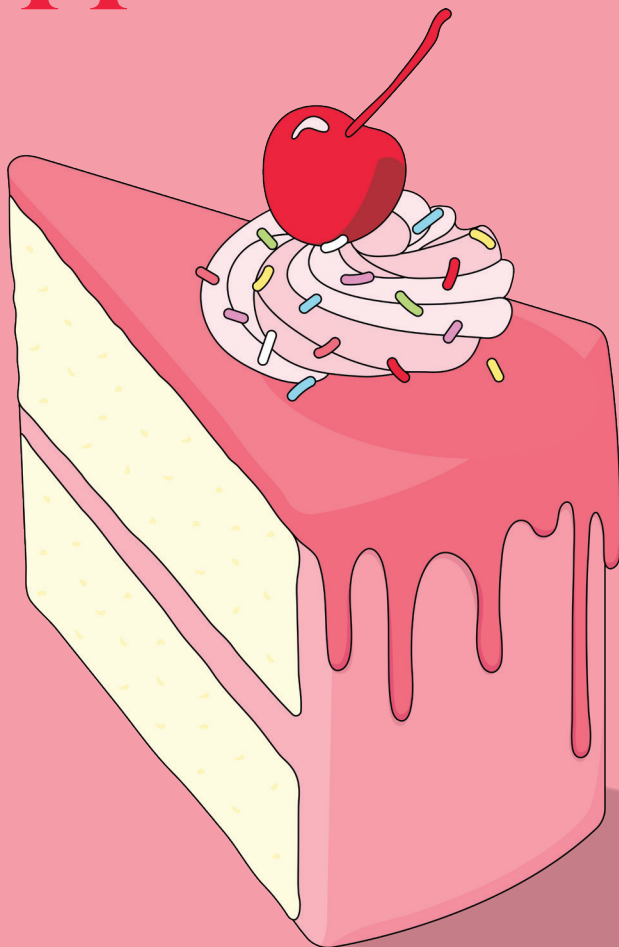


sweet affaire

GALA + AUCTION

SPONSORSHIP + RECOGNITION

opportunities





Ronald
McDonald
House
Marshfield

why RMHC?

**HOSPITALS HAVE DOCTORS.
WE HAVE FAMILIES.**

When a child is diagnosed with a critical illness, everything changes. Families face unimaginable burdens so their child can receive necessary care—often traveling far from home. Those families are forced to stay apart when they need each other most.

For nearly four decades, Ronald McDonald House Charities (RMHC) of Marshfield has provided the home and support that allow families to stay together while they focus on the healing of their sick child at a critical time. So, when a child is sick, not everything has to change.

RMHC helps families:

- 1 Stay close to the care they need, just across the street from the children's hospital.
- 2 Incur fewer expenses and debt that come with living away from home and extensive hospital stays.
- 3 Stay together, providing love and support to one another, improving their family's well-being and their child's recovery.
- 4 Rest and recharge, so they can be their best for their hospitalized child.
- 5 Relieve the stress of where to stay or whether they can afford lodging, food, laundry services, and more.
- 6 Surround themselves with a support system of staff, volunteers and other families who are going through a similar experience. This creates a comfortable space where families can share their experiences and support each other.

RMHC of Marshfield's mission is crucial to hundreds of families every year. Our partners, like you, help us provide a sense of relief and stability in a family-centered environment. You are why we can offer our unique hospitality through our programs and services, free of charge to families. Your investment will give families the essentials they need so they can focus on what's most important—their child's health.

the event



celebrating its
fortieth year,
Ronald McDonald
House Charities
of Marshfield
is once again
hosting the
sweet affaire
gala + auction,
held just once
every five years!

Sweet Affaire is critical to help fund RMHC of Marshfield's core program, Ronald McDonald House. The evening supports the mission of RMHC in keeping families close to their hospitalized child.



join us as a sponsor

		Heart of a Hero ↓ \$10,000	Home for Dinner ↓ \$7,500	Entertainment ↓ \$5,000	Gift of Togetherness ↓ \$2,500	Friends of the Families ↓ \$1,500	For RMHC ↓ \$1,000	Keeping Families Close ↓ \$500
SPOTS	Exclusive sponsorship	♥	♥					
	Two sponsorships available			♥	♥			
	Multiple sponsorships available					♥	♥	♥
SEATING	Two premier tables (seats eight guests)	♥	♥	♥				
	One table (seats eight guests)				♥	♥		
	Four individual attendee tickets						♥	
	Two individual attendee tickets							♥
LOGO	Event website and mobile bidding devices	♥	♥	♥				
	Slides on large projection screens	♥	♥	♥				
	Dessert station signage or table wine tags				♥			
	Bid paddle, cork pull station, or tags on attendee gift					♥		
	Donor logo listed in event program and signage	♥	♥	♥	♥			
RECOGNITION	Table signage	♥	♥					
	Mention from event speakers at the podium	♥	♥	♥	♥			
	Signage on stage, band, or cocktail bar			♥				
	Event program	♥	♥	♥	♥	♥	♥	♥
	Sponsor signage	♥	♥	♥	♥	♥	♥	♥
	Media press release	♥						
	Full page ad in Sweet Affaire event program	♥						
	Half-page ad in Sweet Affaire event program		♥	♥				
	Individual "Sponsor Shout-out" on all social media channels	♥	♥	♥	♥			
Group "Sponsor Shout-out" on all social media channels					♥	♥		

We offer these sponsorship opportunities to facilitate a collaborative conversation towards a mutually beneficial partnership, solely aimed at supporting families with hospitalized children.

To discuss a customized partnership idea for Sweet Affaire Gala + Auction or other ways to engage with RMHC, please contact Iilee Pederson at 715.387.5899 or by email at iilee@rmhcofmarshfield.org.



**Ronald
McDonald
House®
Marshfield**